



Connecting your own device to school wifi

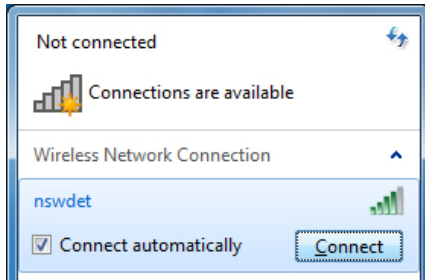


Windows 7 laptops

1. Click on the wireless connection icon at the bottom right of your screen.



2. Select nswdet wireless and click **Connect**.



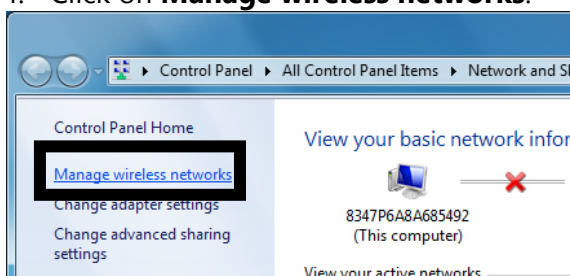
If it's successful enter your internet username and password, but put **@detnsw** at the end of your username. Then jump to Step 14.

If it fails to connect, don't worry. Click **Cancel**.

3. Click **Open Network and Sharing Centre**.



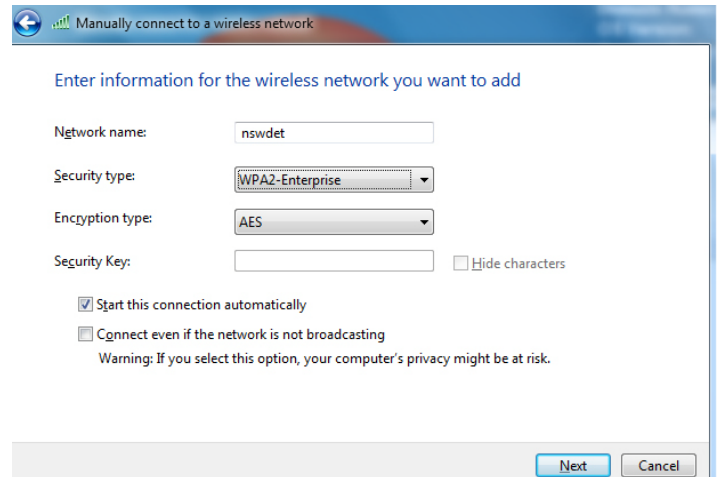
4. Click on **Manage wireless networks**.



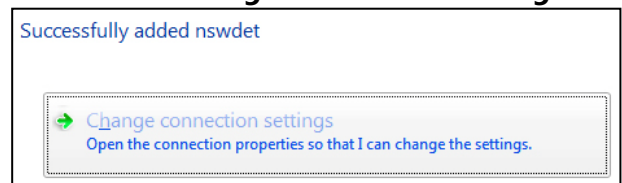
5. Click **Add**



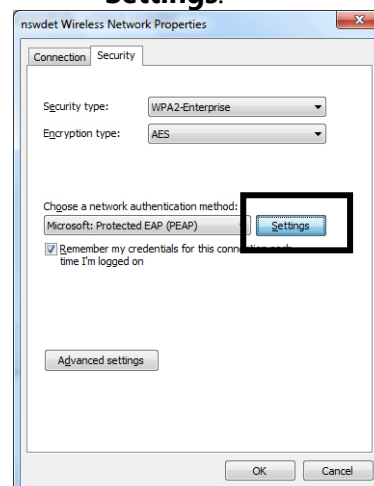
6. Enter the details as per the picture below and click **Next**.



7. Click **Change Connection Settings**.



8. Go to the **Security** tab and make the details are as follows and then click **Settings**.

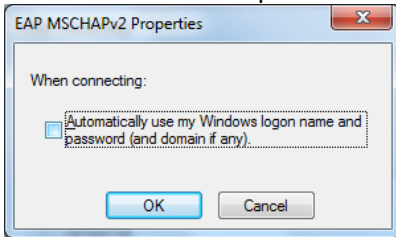




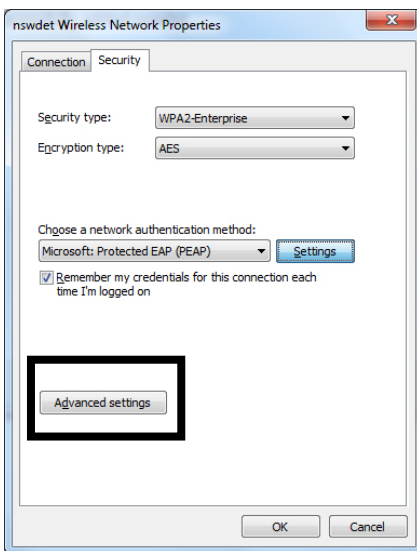
Connecting your own device to school wifi



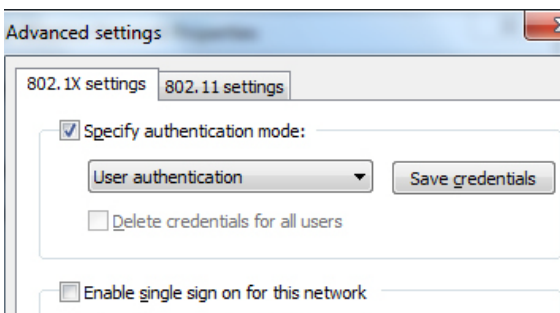
9. Untick this option.



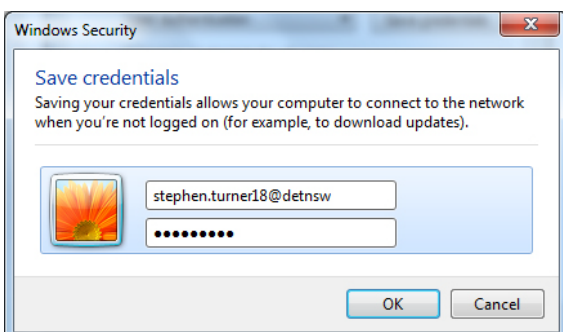
10. Click on **Advanced** settings.



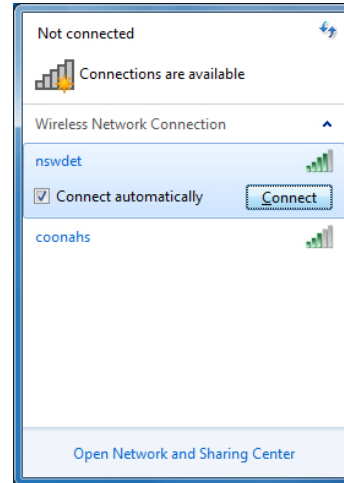
11. Change the settings as per the picture below and click **Save credentials**.



12. Put your internet username and password.
Add **@detnsw** at the end of your username.



13. You should now be connected to the internet. Reselect the nswdet connection and connect manually if required.



14. Open your internet browser. You will be asked to enter your username and password again. This time **don't** put @detnsw at the end of your username.